

ZPA Series

Surface Mount Snap-acting Switches



Description

ZPA series is the newest SMT type mini size package size snap switch. It is a surface mount switch suitable for automatic pick and placed on PCB during production. Fully process sealed.

Features & Benefits

- Reliable snap-acting mechanism
- Long electrical and mechanical life
- Mini packaging size
- Surface mount terminations
- RoHS compatible & compliant

Applications

- PCB detection switch
- Communication devices
- Testing equipment
- Security/Alarm systems
- Consumer electronics

Specifications

Contact Rating	0.1A @ 125 V AC 30 V DC
Electrical Life	1,000,000 cycles @ 0.1A
Mechanical Life	1,000,000 cycles
Insulation Resistance	100 M ohm min.
Dielectric Strength	500 Vrms
Operating Temperature	-40°C to 85°C
Operating Force	80 or 150 grams
Packaging	Switches are supplied in rigid dispensing tubes in full-tube quantities only, this may affect order quantities. Tape and reel packing also available.

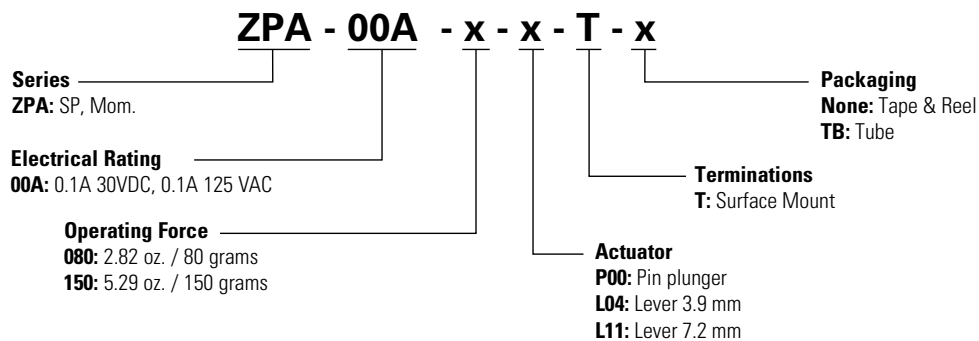
Materials

Case	LCP
Cover	
Actuator	
Movable Contact	Silver alloy
Stationary Contacts	
Terminals	Brass, silver plated.

Notes:
Specifications and materials listed above are for switches with standard options.

Ordering Number

Our easy build-a-switch concept allows you to mix and match options to create the switch you need. To order, select desired option from each category and place it in the appropriate box.

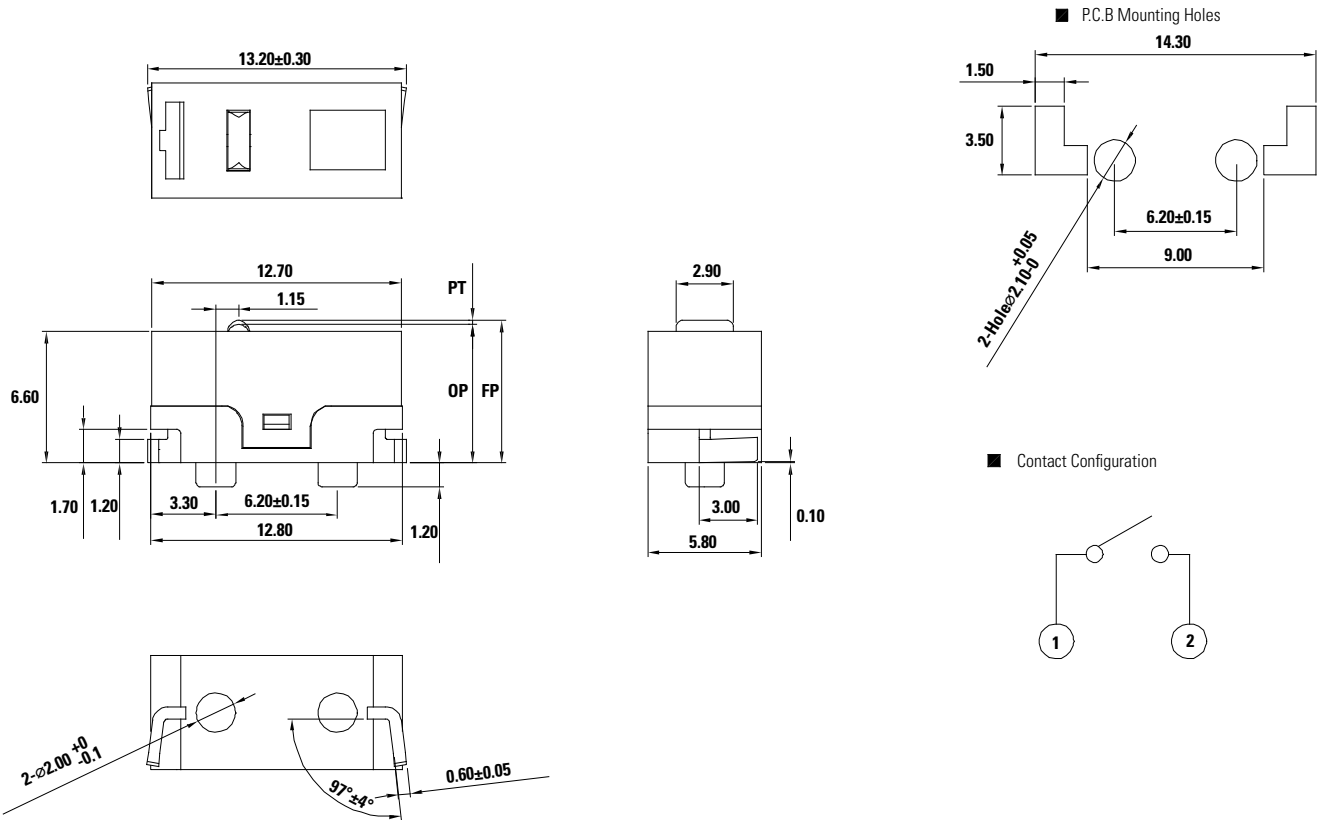


ZPA Series

Surface Mount Snap-acting Switches



ZPA Surface Mount Snap-Acting Switches - SP Momentary



Electrical Rating

Option Code	Silver Contacts
00A	0.1A 30 V DC 0.1A 125 V DC

Operating Force

Option Code	Basic Switch Operating Force (Oz./grams)
080	2.82, 80
150	5.29, 150

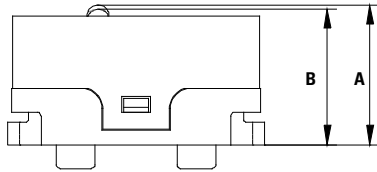
ZPA Series

Surface Mount Snap-acting Switches

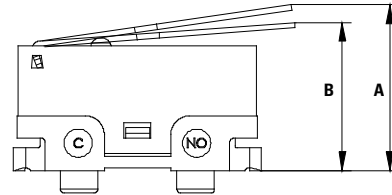


Actuator

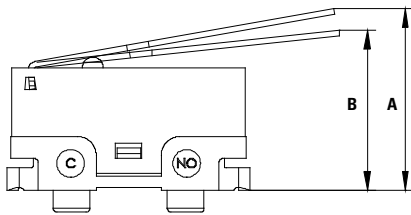
P00 Pin Plunger



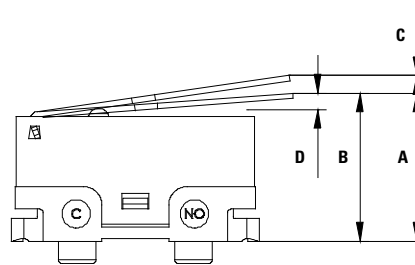
L04 Lever 3.9 mm



L11 Lever 7.2 mm



Switch Characteristics



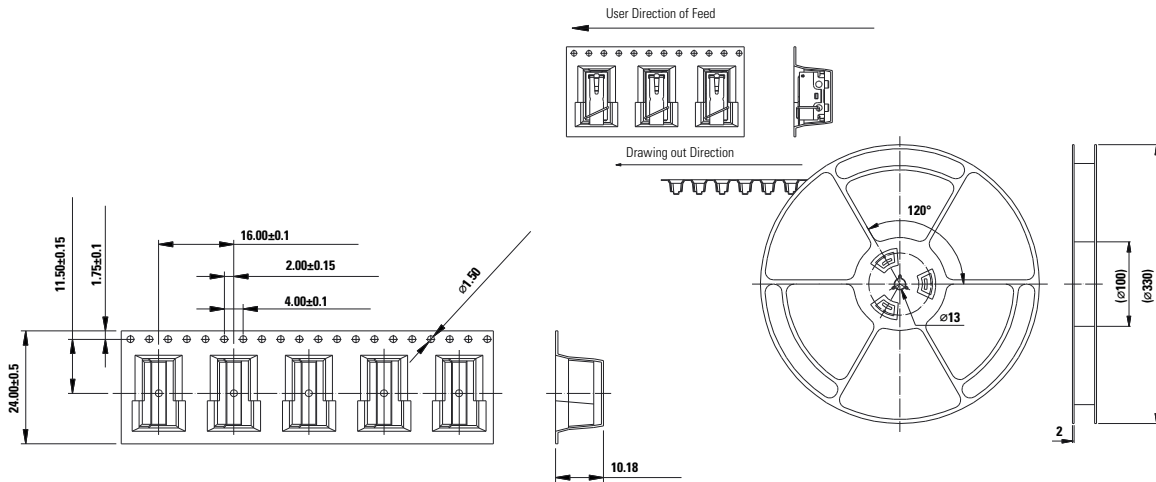
Option Code	Actuator	Operating Force Max.	Rel. Force Min.	'A' FP Max.	'B' OP Max.	'C' PT Max.	'D' OT Min.	Movement Differential
80	P00	Max. 80 gf	Min. 21 gf	Max. 7.35 mm	7.0±0.2mm	Max. 0.62 mm	Min. 0.2 mm	Max. 0.12 mm
	L04	Max. 30 gf	Min. 5 gf	Max. 10.1 mm	7.9±0.8mm	Max. 3.0 mm		Max. 0.8 mm
	L11	Max. 25 gf	Min. 4 gf	Max. 11.7 mm	8.68±1.0mm	Max. 4.4 mm		
150	P00	Max. 150 gf	Min. 35 gf	Max. 7.35 mm	7.0±0.2mm	Max. 0.62 mm	Min. 0.2 mm	Max. 0.12 mm
	L04	Max. 50 gf	Min. 8 gf	Max. 10.1 mm	7.9±0.8mm	Max. 3.0 mm		Min. 0.6 mm
	L11	Max. 39 gf	Min. 6 gf	Max. 11.7 mm	8.68±1.0mm	Max. 4.4 mm		

ZPA Series

Surface Mount Snap-acting Switches

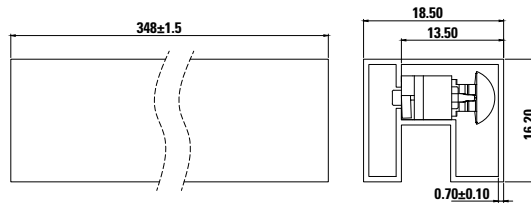


Tape and Reel



Note: Package: 400pcs/reel

Tube



Note: Package: 25pcs/ tube

Disclaimer Notice - Information furnished is believed to be accurate and reliable. However, users should independently evaluate the suitability of and test each product selected for their own applications. Littelfuse products are not designed for, and may not be used in, all applications. Read complete Disclaimer Notice at <http://www.littelfuse.com/disclaimer-electronics>.